



ImpleMentAll

# Implement(ed)All(most) for patients ?

Erik Van der Eycken

EU Research Projects Officer / Exp-by Exp

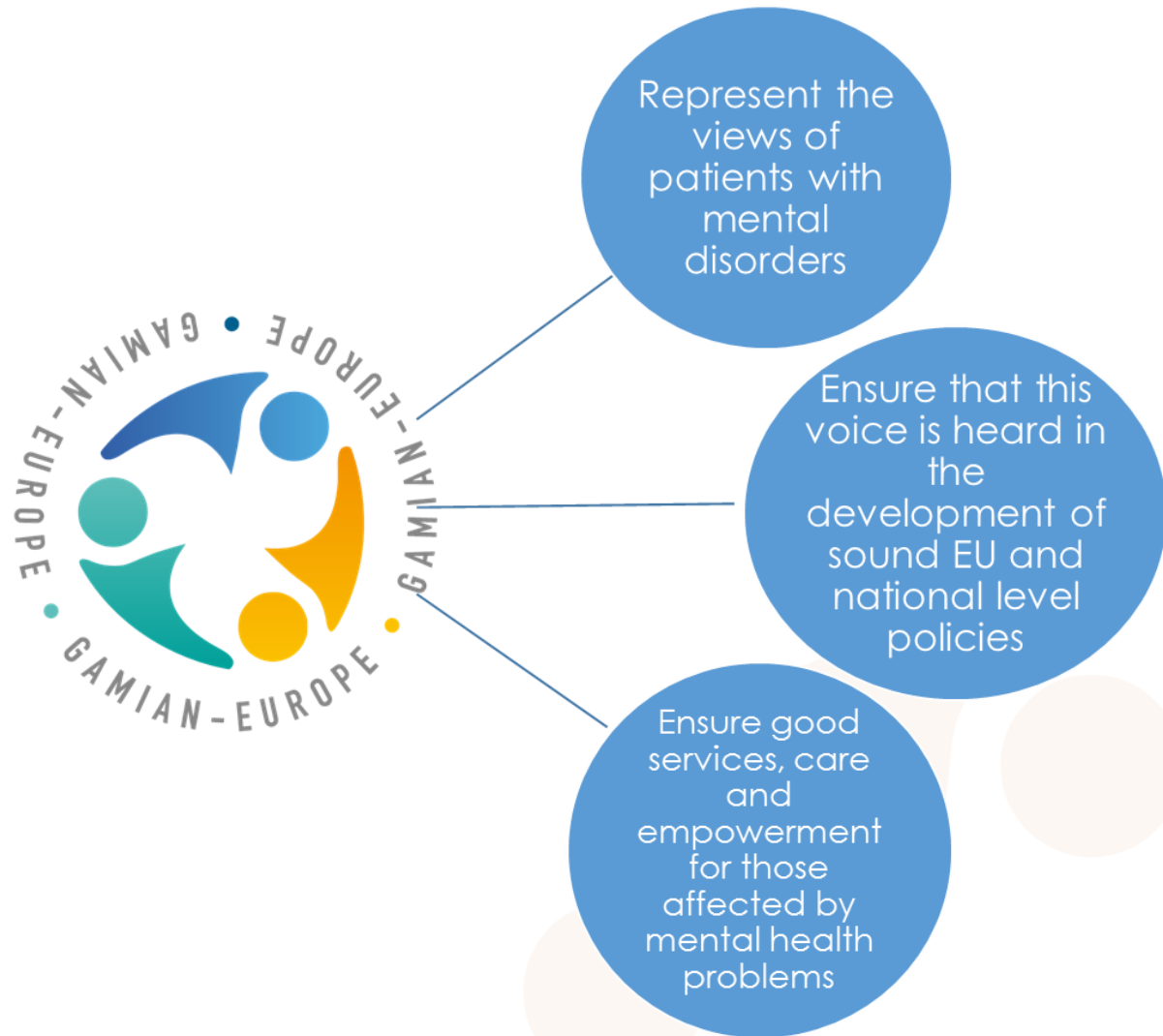
Final Conference - ImpleMentAll project

16-17 March 2021

## About GAMIAN-Europe

GAMIAN-Europe is a representative coalition of patient organisations that seeks to put patients at the centre of all issues of the EU healthcare debate.

We bring together and support the development and policy influencing capacity of local, regional and national organisations active in the field of mental health.





## Members and Partners

GAMIAN-Europe has developed a networking of mental health organisations. We have members from 25 European countries and a strong partnership with recognised European-level organisations.



## Activities

- Participation in EU Research Projects, ROAMER, H 2020
- E-Compared, MasterMind, ImpleMentall a.o....





# ImpleMented All(most) for patients ?



- Mood disorders
- Cognitive Behavior Therapy (CBT)
- Delivered via ICT:
  - Online treatment platform
  - Self-help, therapist guided, and blended with face-to-face sessions



ImpleMentAll



Organisation	Country	Prevention	Primary care	Secondary care	iCBT platform/program	Self-help	Guided	Blended
IMA0101	AL			x	iFight Depression (EAAD)		x	
IMA0201	AU	x	x		MyCompass / research platform	x		
IMA0301	DE		x		iFight Depression (EAAD)		x	
IMA0302	DE	x			Get.On / HelloBetter		x	x
IMA0401	DK			x	NoDep & Fearfighter / MindDistrict		x	
IMA0501	ES			x	Super@tuDepresión		x	
IMA0502	ES		x		Super@tuDepresión		x	
IMA0601	FR			x	MoodBuster		x	x
IMA0701	IT				iFight Depression (EAAD)		x	
IMA0801	NL		x	x	MindWay using MindDistrict			x
IMA0802	NL		x		MySelf / Master your symptoms		x	
IMA0901	XK	x		x	iFight Depression (EAAD)		x	

ImpleMentAll – G.A. 733025 Consortium meeting 9 (online)

# Getting eHealth implementation right



- Personalised e(M) Health or/and Tailored implementation ?
- Users' perspective or/and for health care services ?
- Primary or/and secondary care ?
- Clinical or/and outpatient settings ?



# Getting eHealth implementation right



- Self-Management/help or supportive therapy ?
- Prevention (< Resilience) or treatment ?
- Tele-psychiatry (video consultation) or/and machine-interactive ?
- Apps, serious games, Virtual/Augmented reality, wearables ... ?



# Getting eHealth implementation right



350.000 eHealth Apps  
10.000 eMHealth Apps  
???





# The 'Cofit19'-Tool kit ?



# Getting 'patient engagement' right



ONLINE PLATFORM WITH GOOD PRACTICES AND INVOLVEMENT OPPORTUNITIES etc..

RIGHT BALANCE BETWEEN EDUCATED TO UNDERSTAND & PERSONAL LIVED EXPERIENCE

LIMITED NUMBERS OF PATIENTS TO PARTICIPATE

IDENTIFY REQUIRED PATIENTS INPUT WITHIN RESEARCH

OVERCOME LANGUAGE BARRIERS

DEVELOPING RELATIONSHIPS WITH PATIENTS AND THEIR CAREGIVERS

FACED WITH 'CLOSED DOORS'

TRUST & RELATIONSHIP-BUILDING

A POOL OF PATIENT EXPERTS

ATTITUDE SHIFT & CULTURE CHANGE

PATIENT JOURNEYS /STORYBOARDS BY PATIENTS ORGANISATIONS

PATIENT EMPOWERMENT BY DIGITALISATION FOR SPEECH IMPEDED PATIENTS

TRAINING OF EXPERT PATIENTS & RESEARCHERS

APPROPRIATE H/W &S/W BY PROVIDERS

WIDE REPRESENTATION ON GEOGRAPHIC AND CULTURAL LEVEL

MEET PATIENTS' NEEDS USE E-TECHNOLOGY

ADDITIONAL COMMUNITY ADVISORY BOARDS RUN BY PATIENTS ORGANISATIONS



ImpleMentAll

# Thank you

Erik Van der Eycken  
EU Research Projects Officer / Exp-by Exp

Final Conference - ImpleMentAll project  
16-17 March 2021